



Meeting: Tauranga Moana Advisory Group

Meeting Date: 1 March 2024

Tabled Documents

Agenda Item 10.1 Presentation: Stellar Passage - Interim Environment Court Decision

Presentation - Stella Passage Interim Decision - TMAG 2024-03-01 **2**

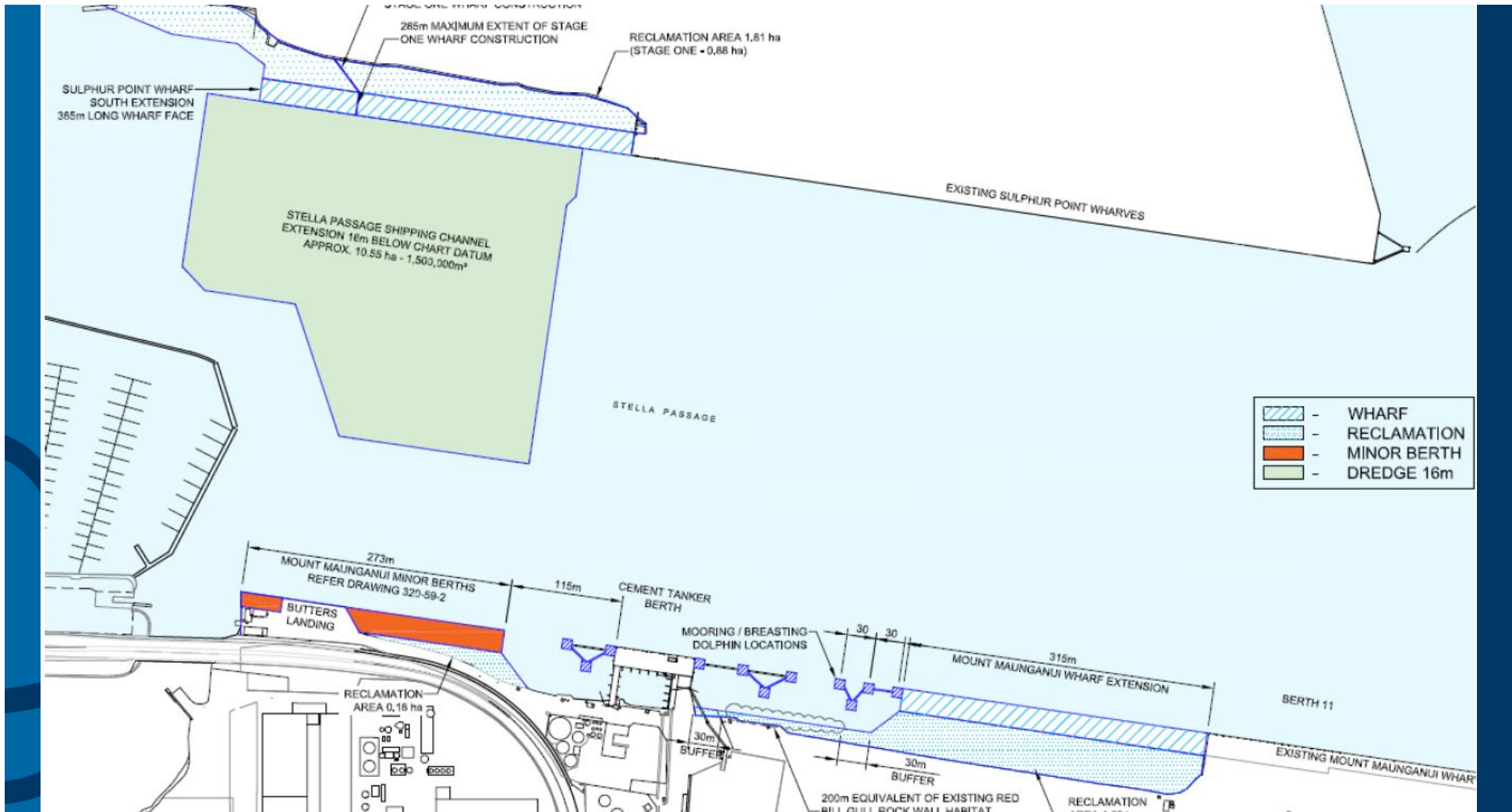
Agenda Item 12.1 Long Term Plan 2024-2034 Consultation

Presentation - BOPRC LTP Consultation pdf - TMAG 2024-03-01 **15**

Stellar Passage Interim Decision

1 March 2024







Direct Referral to the Environment Court

- Consultant planner to assist the Court
- No council hearing – straight to Environment Court hearing
- Court hearing in February / March 2023
- The proposal was reduced in scope during processing of the application
- Interim decision in December 2023



Stage 1

- Sulphur Point wharf extension within the already consented area of dredging
- Intention to grant consent subject to the Court being satisfied with some specific matters.
- Further information is required.

Stage 2

- Sulphur Point wharf extension
- Mt Maunganui wharf proposed works
- Decision reserved



Kaimoana Monitoring

- **Minimum of three kaimoana surveys** at Te Paritaha to be undertaken by **13 June 2024**;
- The Port is to fund the surveys. If mātauranga Māori resources are not available to undertake monitoring as part of the surveys, the Port should consult tangata whenua and BoPRC on an alternative way of proceeding [568].
- A comprehensive **State of the Environment report** must be provided by the Port by 13 June 2024. The SoE report must take into account the surveys and tangata whenua views, and include all effects occurring within all areas affected by Port operations [437].
- A **summary of the survey results and SoE report** is to be provided to the parties by 31 August 2024.
- Follow up kaimoana surveys to be undertaken, here and other parts of Te Awanui affected by Port operations, to be provided by 31 December 2026.



Southern Te Awanui Harbour Health Plan

- **Detailed scoping for the Plan** must be prepared by **13 June 2024**.
- The Plan is to promote integrated management with the goal of improving the health of Te Awanui.
- The Court did not find a direct causal link between effects of Port operations and erosion and sedimentation but couldn't rule it out, so it is to be included in the Plan with opportunities for Mātauranga Māori and western science experts to work together [464].
- The final Plan is due within 2 years of the Court's final decision date.



Southern Te Awanui Harbour Health Plan

- Vision
- Goals,
- Focus areas, and
- Actions that various parties with a role in promoting the health of Te Awanui can play in achieving the vision
- To be developed with Tangata Whenua, Tauranga Moana Advisory Group, the Port and Councils
- Similar to the plan for Lyttleton Harbour



Plan

- Update to the Blue Penguin and Avian Management Plan
- Input from Tangata Whenua and Department of Conservation
- Include some restoration of the sand pile



Kaitiaki Role

- Meaningful kaitiaki role for tangata whenua
- To promote Regional Coastal Environment Plan provisions, including in monitoring programmes and resulting management decisions.
- Management structure
- How the implementation of the plan is to be funded.
- A collaborative approach where tangata whenua determine how they are involved

Ngāti Kuku and Whareroa Marae

- Demonstrate appropriate recognition of and provision for the relationship of Ngāti Kuku and Whareroa Marae with their ancestral taonga.



Wananga

Once these actions are completed, the Port must convene a wananga with tangata whenua and Toi Moana/BoPRC to discuss the information produced.



Visual Simulations for Stage 2

- Visual “before and after” simulations showing structures, vessels and stacked containers on the Sulphur Point side and proposed development on the Mt Maunganui side, along with draft conditions to avoid, remedy or mitigate enclosure effects and encroachment. This is because:
 - *[410] The acceptability of any further visual enclosure of the Marae by activities on the Sulphur Point side requires an evidential basis, taking into account that extension of the wharf and associated berthing of large vessels alongside is not a permitted activity.*



Te Mahere Tūroa

Draft Long Term Plan 2024 - 2034

Tauranga Moana Advisory Group
1 March 2024





Our strategic direction

Toi Moana are focused on working collaboratively with Māori over the next ten years, as key contributors to strategic direction and leadership in the region.

Te Ara Poutama

Te Ara Poutama is a new community outcome that will focus on partnering with tangata whenua and community towards a prosperous and equitable regional future.

We will achieve this by:

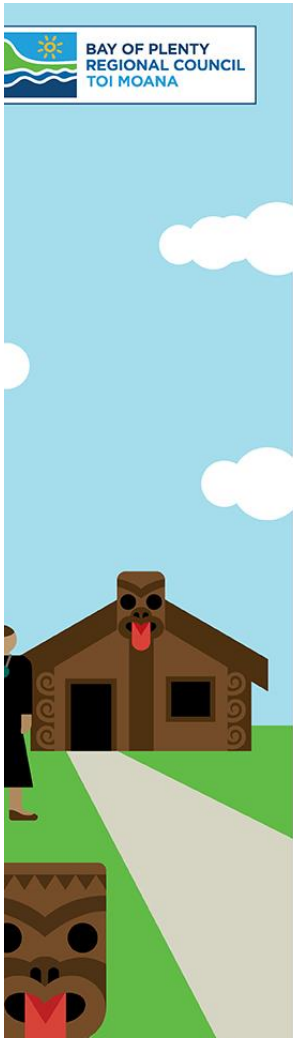
- Supporting enhanced Māori participation in operational activities
- Supporting Māori capacity and capability building
- Ensuring an equitable approach to the four wellbeings and delivery of community outcomes
- Partnering with Māori to enhance delivery and share decision making



Consultation Questions

Toi Moana will be consulting with the community on three key issues:

1. Who should pay for buses
2. Whether to sell some Port of Tauranga shares
3. New regional parks

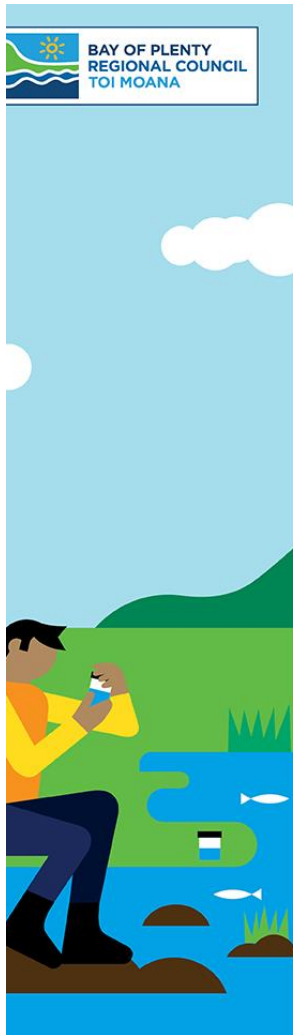


LTP Consultation

An opportunity for tangata whenua and the community to give feedback on the strategic direction of Toi Moana over the next ten years, including the work we deliver and how that work will be funded.

Timeline





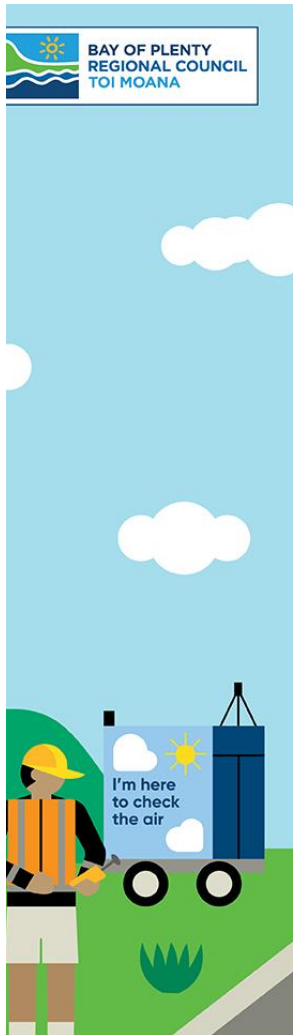
Consultation with Māori

We welcome feedback from Māori on the consultation topics, the proposed new community outcome Te Ara Poutama and the activities that will contribute to supporting this strategic direction.

Direct engagement

We will be engaging directly with Māori on the LTP during the consultation period by:

1. Meeting with iwi authorities, co-governance entities and other Māori leaders
2. Online hui/webinars that focus on the kaupapa Māori initiatives with the LTP:
 - a. Mauao: Thursday 14 March at 12.30pm
 - b. Ōkurei: Monday 18 March at 12.30pm
 - c. Kōhī: Thursday 21 March at 12.30pm



Next Steps

1. **Direct engagement.** If the Tauranga Moana Advisory Group would like to discuss the LTP in further detail, we can meet separately during the consultation period.
2. **Submissions.** We encourage Tauranga Moana Advisory Group members to provide feedback, which will inform the final LTP decision-making.
3. **Hearings.** We will be holding hearings in May 2024 (dates tbc) for submitters to speak to Toi Moana Councillors about their submission.
4. **Adoption.** Council will formally adopt the LTP in June 2024