

**Meeting:** Bay of Plenty Civil Defence Emergency Management Group  
Joint Committee

**Meeting Date:** 31 March 2023

---

## **Tabled Documents**

---

### **Agenda Item 7.7 Cyclone Gabrielle Response**

**Tabled Document 1 - Role of Elected Members in Recovery** **2**

### **Agenda Item 7.8 Verbal Update - Director, Emergency Management Bay of Plenty**

**Presentation Emergency Management - Directors Update - Joint  
Committee Meeting - 2023-03-31** **3**



## Elected Representatives roles during recovery

Recovery starts during the response phase and concludes when demands on services have returned to more normal levels and the needs of those affected (directly and indirectly) have been met. Put simply, people and communities are recovered when they are leading a life they value living, even if it is different to life before the disaster event.

**Regional councils** support recovery management often but not limited to recovery arrangements at CDEM Group level. This involves :

- Providing support to CDEM Groups and/or territorial authorities eg staff and resources, recovery activities in relation to Regional Council business as usual functions
- Provide agreed services to other CDEM groups

**Territorial authorities** are typically at the forefront of recovery delivery and coordination. Recovery activities needed to support communities after an emergency rely heavily on a local authority's core business. For example, housing, infrastructure, funding, land use, community engagement and community development. The roles of territorial authorities in recovery are to:

- lead, promote and champion city-/district-wide investment in resilience
- lead and manage emergency recovery activities at the local level
- provide a coordination point for recovery management at the local level; support for a Local Recovery Manager and a Local Recovery Team, including providing funds, managing recovery claims and Mayoral Funds.

### Local politicians (Mayors, Councillors and Regional Council Chairs) during recovery

Governance leadership sets the whole tone and approach towards recovery management, and this shapes how recovery activities are managed and funded to support communities. Experience from recoveries show that the following factors will greatly enhance recovery effectiveness:

- highly engaged Mayors are the public 'face and voice' of recovery
- Mayors provide linkages and liaison with local and central Government, and
- Councillors, Chairs and Community Board members actively support recovery.

### Mayors, Councillors and Chairs will need to

- keep up to date on the situation
- attend and participate in community meetings to provide information and support to affected communities
- the Mayor or person designated to act on their behalf will act as spokesperson, providing information or statements to the media and Government officials on recovery activities
- communicate information to the affected communities, and act as a conduit between the communities and the Recovery Team, ensuring their issues, needs and concerns are raised and acted upon,
- advocate to central government and the private sector for support.

### Information Resources

1. [Elected-Officials-AFTER-An-Emergency-Nov19.pdf \(civildefence.govt.nz\)](#) *DPMC pamphlet*
2. [Resources for elected officials » National Emergency Management Agency \(civildefence.govt.nz\)](#) *-video*
3. [Recovery Preparedness and Management Director's Guideline full version \(civildefence.govt.nz\)](#) *refer PART A Section 5*

# Emergency Management Bay of Plenty

## Directors Update



# Emergency Events

## Tornados – Western Bay of Plenty

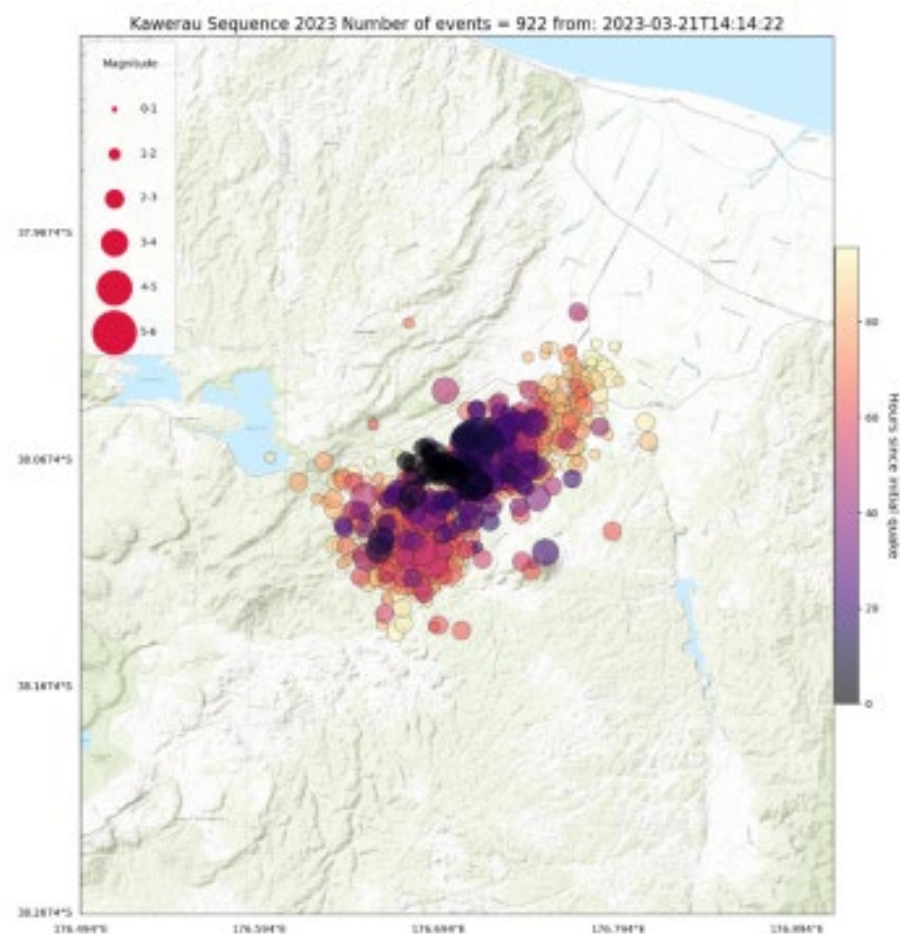


**EMERGENCY  
MANAGEMENT**



# Emergency Events

## Earthquake Swarm – Kawerau District



**EMERGENCY  
MANAGEMENT**



# Whakaari Trial



**EMERGENCY  
MANAGEMENT**



# Emergency Management Weekly Update – are these of value????

**EMERGENCY  
MANAGEMENT**



# Thank you / Ngā mihi

**EMERGENCY  
MANAGEMENT**

