

**Meeting:** Te Maru o Kaituna River Authority

**Meeting Date:** 25 February 2022

---

## **Tabled Documents**

---

### **Agenda Item 10.4   Essential Freshwater Policy Programme 2022**

**Presentation - Freshwater Vision**

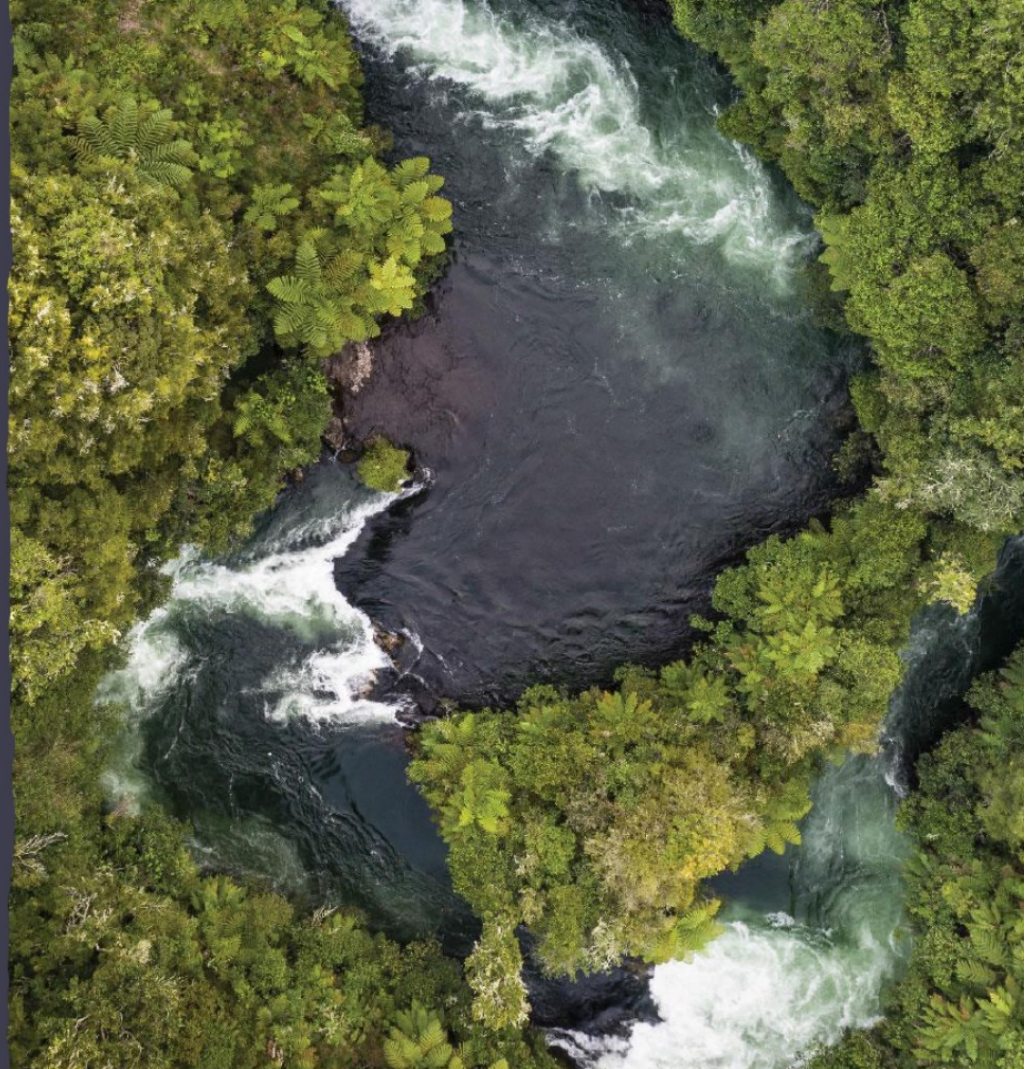
**2**

# Te Maru o Kaituna

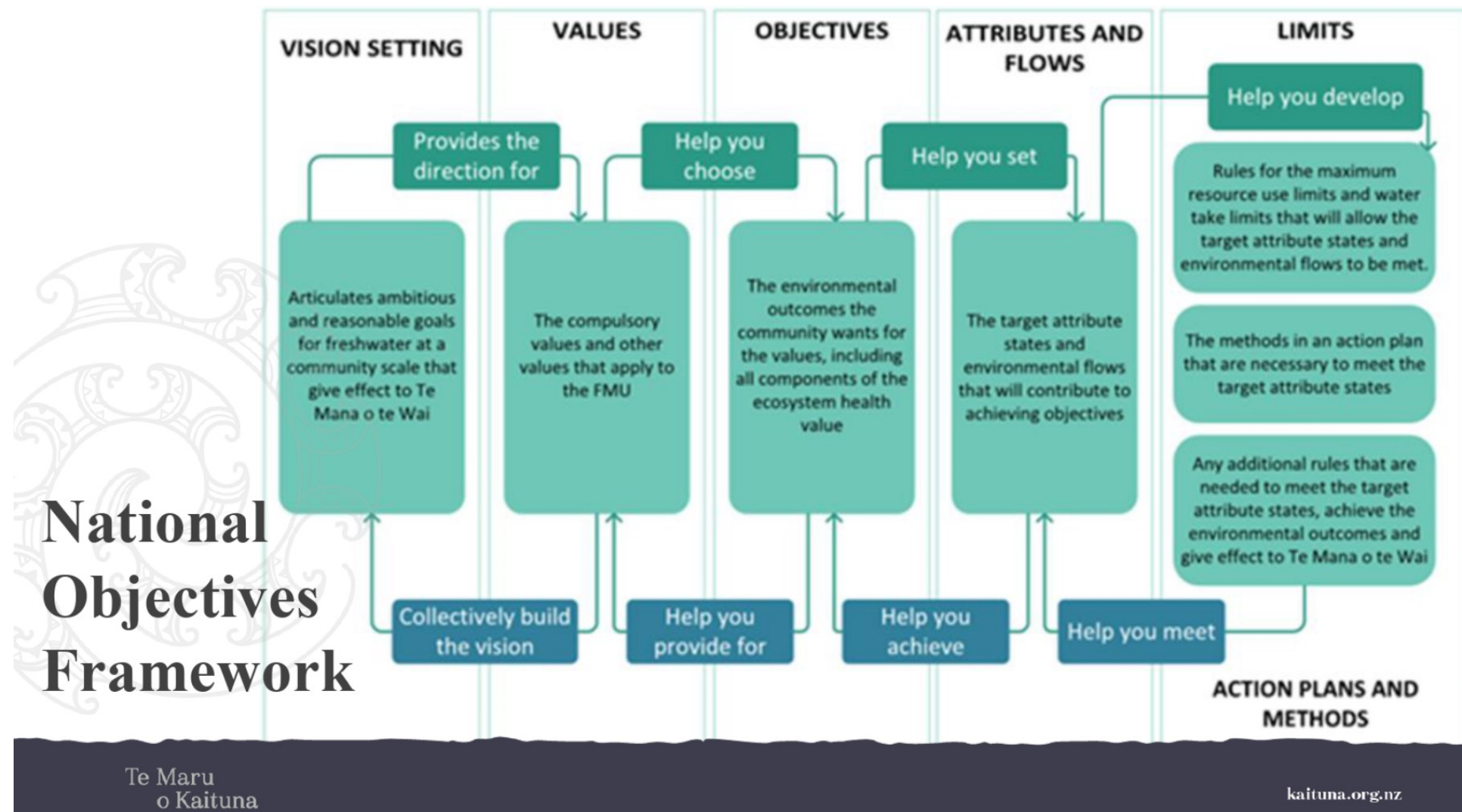
## EFPP update and Kaituna Moemoea / vision

25 February 2022

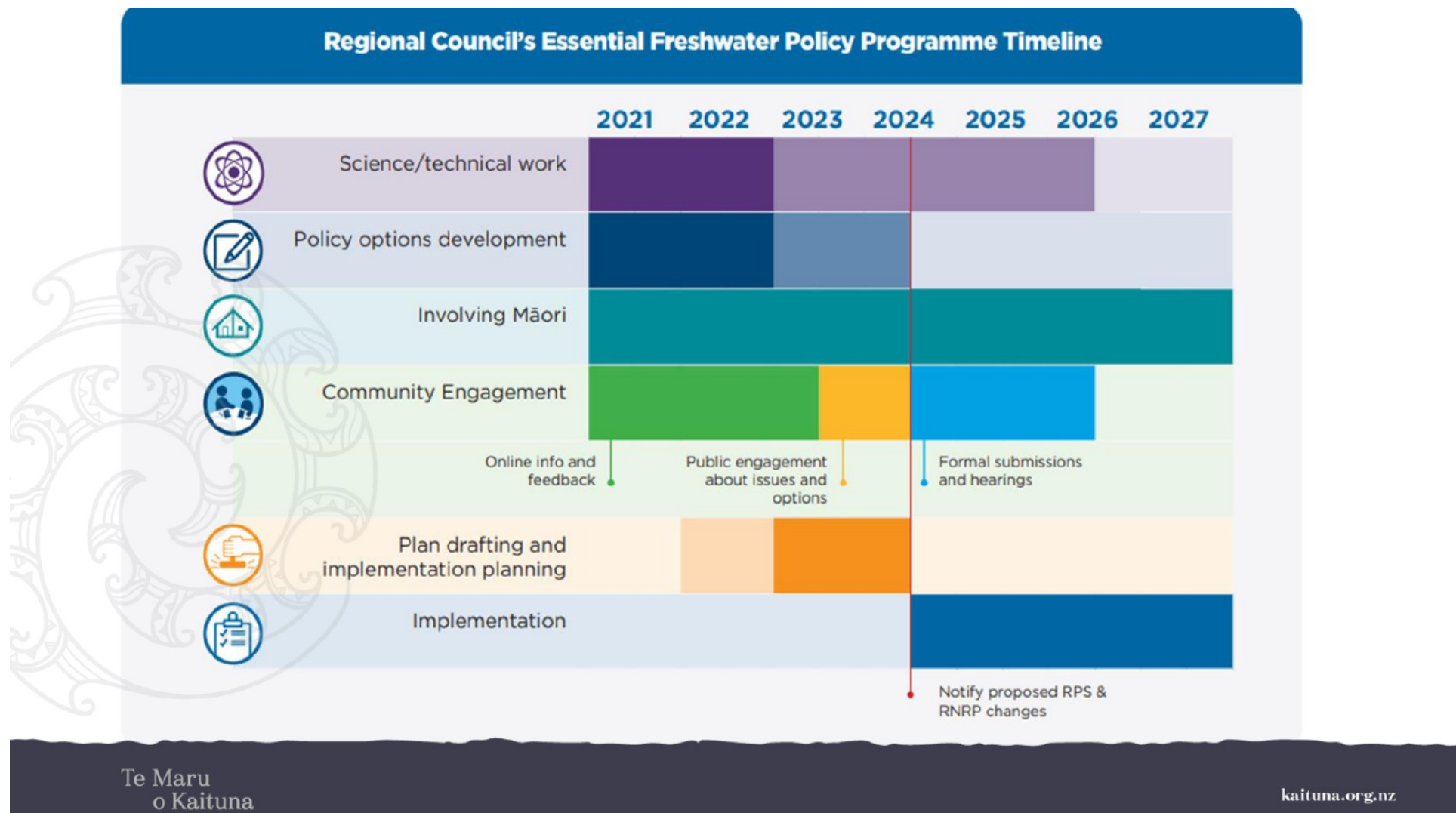
Zoom only (due to Covid red traffic light phase 2 restrictions)



Item 10.4, Presentation - Freshwater Vision





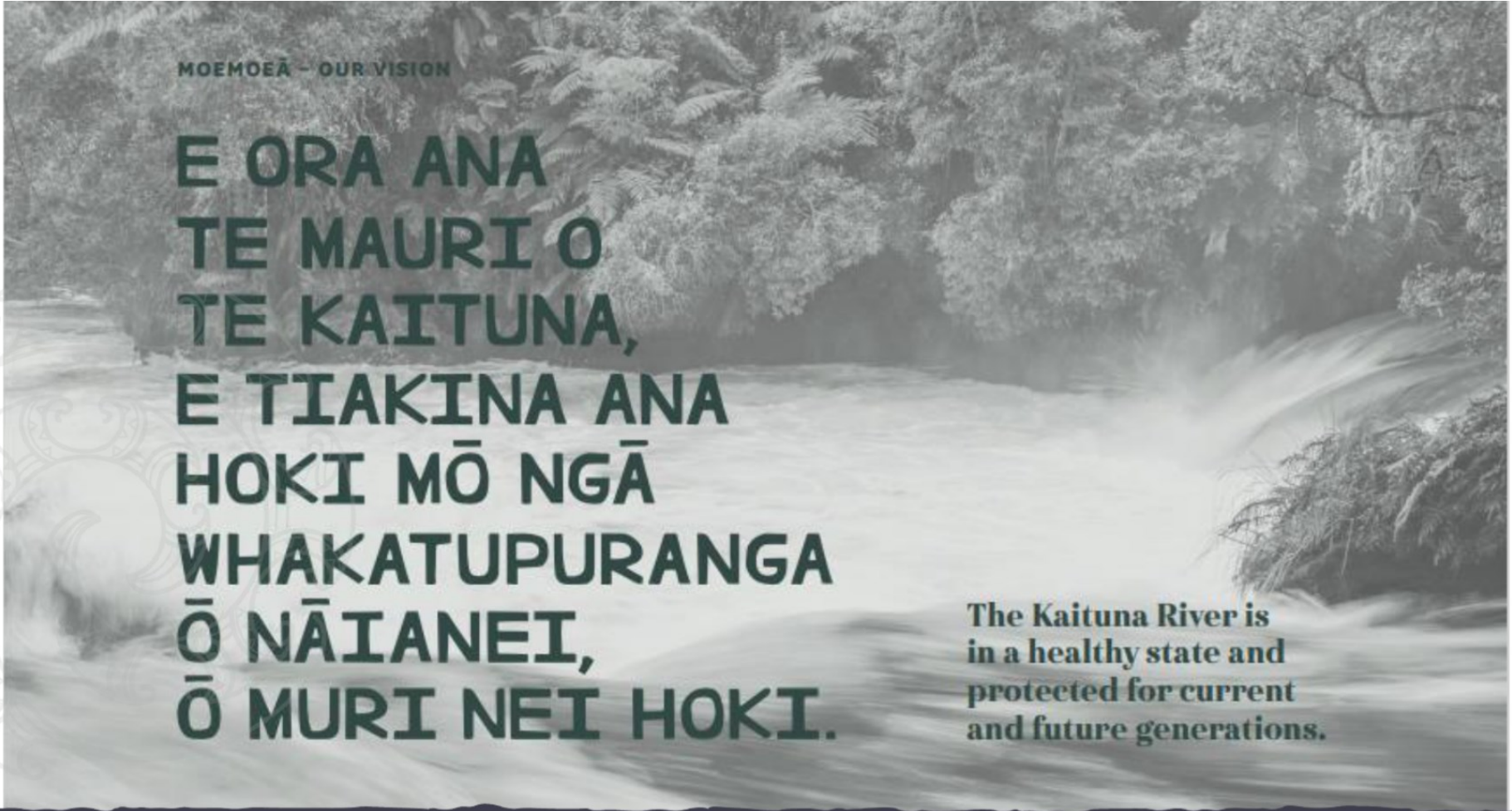


# Kaituna example long-term vision

- Delivers the NPSFM requirements (once timeframes are set);
- Reflects the vision and themes from *Kaituna, he taonga tuku iho* & proposed Change 5
- Builds on to, rather than repeats effort invested and engagement to date

Te Maru o Kaituna River Authority is a co-governance partnership set up by the Tapuika Claims Settlement Act 2014, made up of iwi and council representatives.

[kaituna.org.nz](http://kaituna.org.nz)



**MOEMOEĀ – OUR VISION**

**E ORA ANA  
TE MAURI O  
TE KAITUNA,  
E TIAKINA ANA  
HOKI MŌ NGĀ  
WHAKATUPURANGA  
Ō NĀIANEI,  
Ō MURI NEI HOKI.**

The Kaituna River is  
in a healthy state and  
protected for current  
and future generations.

Te Maru o Kaituna River Authority is a co-governance partnership set up by  
the Tapuika Claims Settlement Act 2014, made up of iwi and council representatives.

[kaituna.org.nz](http://kaituna.org.nz)

# Example Moemoea/Vision: Kaituna FMU

*The health and well-being of the Kaituna River and its tributaries are protected for current and future generations and where degraded restored to [support / cause no further decline in] ecosystem health, well-being, values and objectives of the Te Awa o Ngātoroirangi / Maketū Estuary.*

*The Kaituna FMU [together with Lake Rotorua and Lake Rotoiti] will:*

- 1. support thriving mahinga kai, which is abundant, accessible and safe to eat for the local community and their manuhiri (particularly tuna (eel), inanga (whitebait), kōura (crayfish) and kuku (mussels))*
- 2. support water quality which is safe for swimming, recreation and mahinga kai gathering*
- 3. support resilient, healthy and diverse aquatic life*
- 4. protect and restore wetlands and riparian margins*
- 5. protect wai tapu (places of significance to iwi) and the mauri of sites traditionally used for cultural ceremonies*
- 6. protect and restore habitats of threatened species x, y & z and these species begin to recover*
- 7. efficiently provide drinking water for local towns, settlements and sub-regional growth areas (Te Puke, Maketū, Paengaroa & Pukehina and Pāpāmoa & Te Tumu growth areas)*
- 8. In the lower Kaituna, preserve and where compromised [restore /enhance] natural form and character of the awa, including margins, wetlands and fauna.*

Te Maru  
o Kaituna

kaituna.org.nz



# Example Moemoea/Vision: Kaituna FMU

*The Kaituna FMU [together with Lake Rotorua and Lake Rotoiti] will contribute freshwater to Te Awa o Ngātoroirangi / Maketū Estuary which [supports / causes no further decline in] the health and well-being, values and objectives for the estuary. This includes:*

- 9. reducing sediment accumulation in the estuary over time (compared to 2014 levels), in turn contributing sufficient water depth, flow and quality enabling navigable channels in the estuary that are currently navigable.*
- 10. [supporting / causing no further decline in] the ecosystem health, including indigenous avifauna, vegetation and fish habitat, and their food sources in Te Awa o Ngātoroirangi / Maketū Estuary.*


*The vision is to be achieved within the following timeframes:*

XXXXX

Te Maru  
o Kaituna

kaituna.org.nz





**Is TMoK comfortable endorsing the  
example Kaituna vision for iwi and  
community engagement?**

**Does TMoK wish to provide any specific  
feedback to Toi Moana in response to the  
letter?**



**Item 10.4, Presentation - Freshwater Vision**