



Meeting: Rotorua Te Arawa Lakes Strategy Group Workshop
Meeting Date: 20 September 2024

Tabled Documents

Refreshed Strategy Workshop No. 3

<u>Presentation 1 - 2409 Refreshed Lakes Strategy</u>	2
<u>Tabled Document 1 - 240920 Worksheet: Refreshed Lakes Strategy Components A3 - 20 September 2024</u>	24
<u>Tabled Document 2 - 240920 Handout Refreshed Lakes Strategy A4 - 20 September 2024</u>	26

A blue graphic with a large white spiral on the left side. The text 'Refreshed Lakes Strategy' is written in large white font, with 'Workshop 20 September 2024' below it. In the bottom right corner, there is a logo consisting of a dark blue water drop shape with a white spiral inside, and the text 'Rotorua Te Arawa Lakes Programme' below it. The website address 'www.rotorualakes.co.nz' is partially visible at the bottom left.

Refreshed Lakes Strategy

Workshop 20 September 2024



Rotorua
Te Arawa Lakes
Programme

www.rotorualakes.co.nz

Agenda

1. Progress to date (2 min)
2. Workshop session (40 min)
3. Where to from here? (3 min)
4. Update on RTALSG Review actions (10 mins)

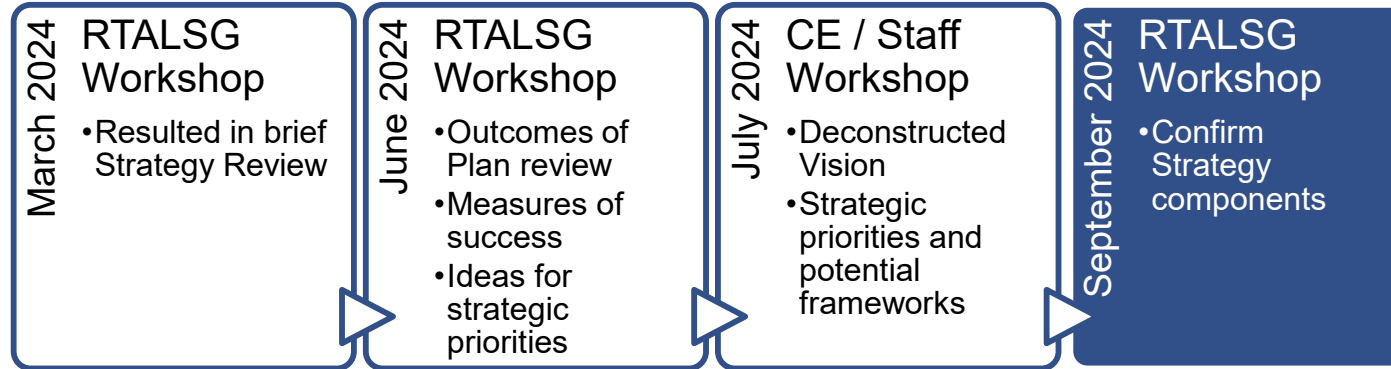


www.rotorualakes.co.nz

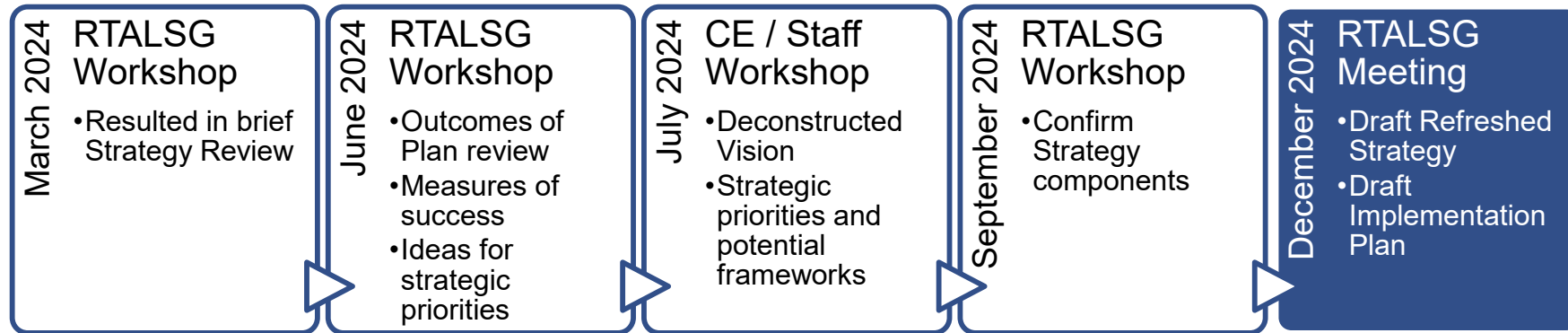


Refreshed Strategy: Progress to date

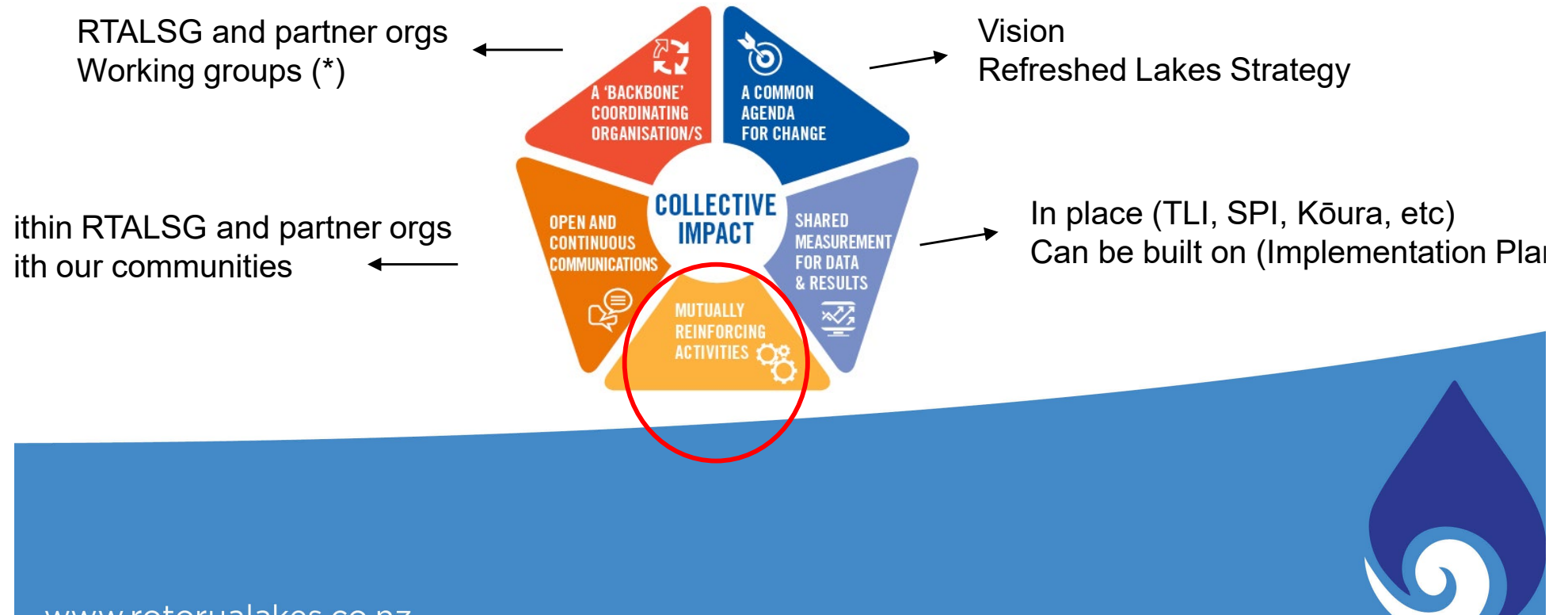
Process so far



Our goal for this year



Ensuring collective impact





Workshop session: Core components of refreshed Strategy

Strategy components



Actions / projects (via Implementation Plan)



Vision

The lakes of the Rotorua district and [redacted] are preserved and [redacted] for the use and [redacted] of present and future generations, while recognising and [redacted] the traditional relationship of Te Arawa with their [redacted]

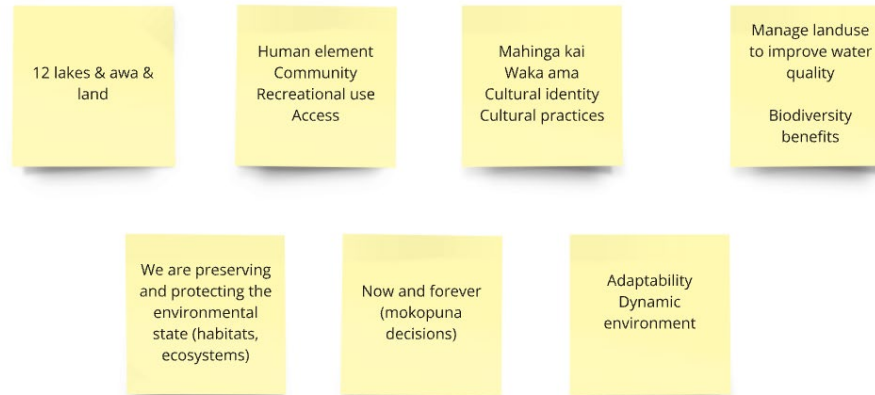
No change to Vision – established via Settlement Act



Vision

The lakes of the Rotorua district and their catchments are preserved and protected for the use and enjoyment of present and future generations, while recognising and providing for the traditional relationship of Te Arawa with their ancestral lakes.

This means:



SCOPE OF STRATEGY

Anything else?

From July CE/staff workshop



Imagining success



- Life
- Mokopuna swimming
- Kōura & other kai
- Crystal clear water
- More native plants
- Weed/rubbish-free
- People are safe/secure
- Happy whānau
- Kids doing manus (bombs) on any lake
- Kai & connection
- Papakāinga
- Ecotourism
- More community
- Cultural practice as a norm



- Native birds
- Laughter
- Splashing
- Relative silence



- Tranquility / at peace
- Love
- Connection / Re-connection
- Proud

In the future, you are standing beside your favourite lake which has been cared for via a successfully implemented Lakes Strategy. What are you seeing, hearing and feeling?

From June RTALSG workshop

www.rotorualakes.co.nz



Key themes from June workshop

Ecological restoration / wellbeing

- Restoration of native species (freshwater, terrestrial)
- Water quality & sustainable land use
- Biosecurity (freshwater, terrestrial)

Cultural reconnection / wellbeing

Community engagement / recreation



www.rotorualakes.co.nz

Ideas from June workshop



Where should we - as a collective – be focusing our efforts?

Key terms



Term	Meaning	Example
Strategic priorities	What needs to be achieved – high-level themes or areas for focused action that align with the Vision.	Ecological health of lake ecosystems
Priority actions	How it will be achieved - actionable initiatives, projects or interventions that align with one or more strategic priority.	New wetlands Lake weed management
Enablers	What is needed to support those efforts – supporting conditions to ensure an action is possible or carried out effectively.	Research and monitoring Funding



Strategic Priorities

Where best to focus action / effort to achieve Vision

Foundation and framework for Strategy & reporting

CURRENT STRATEGY

CONNECTED: All is connected – our waters, our vision, us

- working together in partnership
- recognising lakes catchment complexity
- integrating Te Arawa/iwi values

ICONIC: An iconic lakes catchment

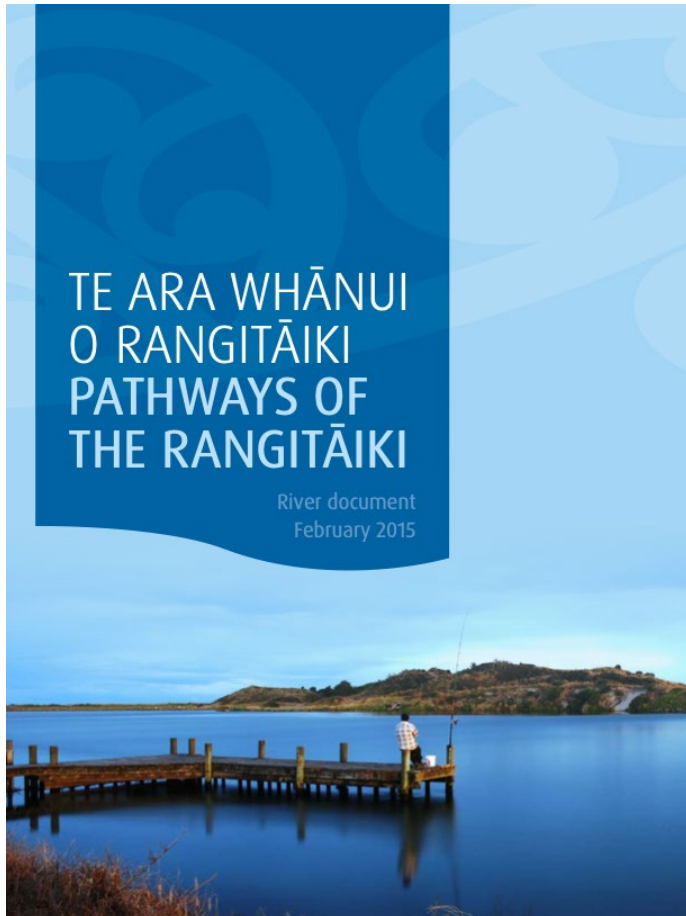
- use and enjoyment
- water quality
- natural environment

PROSPEROUS: Prosperous lakes catchment, thriving and future thinking

- sustainable economic opportunities and innovation
- whanau / marae / hapū development
- certainty



Examples of Strategic Priorities



Ecosystem health & taonga species

Water Quality

Prosperity

Community

Iwi / hapū

Structures

1. The catchment are protected, through measures including enhancement and restoration of their habitat and migration paths.

2. The habitats that support indigenous species and linkages between ecosystems within the Rangitāiki River catchment are created, protected and enhanced.

3. Water quality is restored in the Rangitāiki catchment.

4. Prosperity in the Rangitāiki catchment is enabled within the sustainable limits of the rivers and receiving environment.

5. The relationship between communities and the Rangitāiki catchment is recognised and encouraged.

6. The practice of kaitiakitanga in decision-making for managing the resources of the Rangitāiki catchment is recognised and provided for.

7. Naturalness of the river and the landscape of the Rangitāiki catchment is respected.



... so the tuna (eels) are fat and plentiful in the Rangitāiki River waterways.



... so it is safe for people to swim in, take food from, and find drinking water in as many places as possible.



Examples of Strategic Priorities



Iwi Relationships

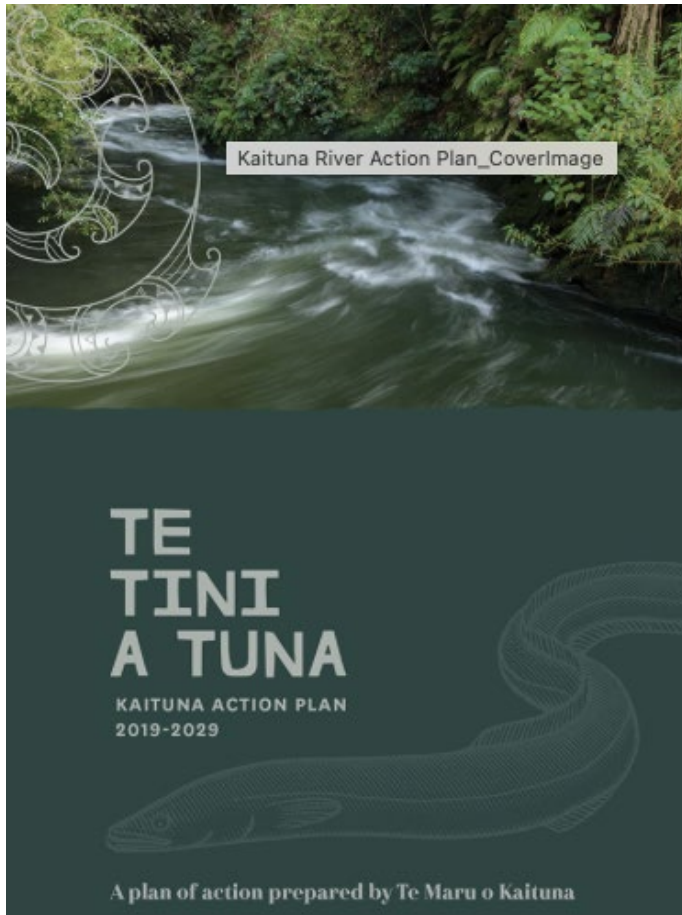
Water Quality & Quantity

Land Use

Collaboration with Iwi and

- Objective 1** The traditional and contemporary relationships that iwi and hapū have with the Kaituna River are provided for, recognised and protected.
- Objective 2** Iwi-led projects which restore, protect and/or enhance the Kaituna River are actively encouraged, promoted and supported by Te Maru o Kaituna through its Action Plan.
- Objective 3** Water quality and the mauri of the water in the Kaituna Riv are restored to a healthy state and meet agreed standards
- Objective 4** There is sufficient water quantity in the Kaituna River to:
 - a Support the mauri of rivers and streams.
 - b Protect tangata whenua values.
 - c Protect ecological values.
 - d Protect recreational values.
- Objective 5** Water from the Kaituna River is sustainably allocated and efficiently used to provide for the social, economic and cultural well-being of iwi, hapū and communities, now and for future generations.
- Objective 6** The environmental well-being of the Kaituna River is enhanced through improved land management practices.
- Objective 7** Ecosystem health, habitats that support indigenous vegetation and species, and wetlands within the Kaituna River are restored, protected and enhanced.
- Objective 8** Te Maru o Kaituna in collaboration with iwi and the wider community, enable environmental, economic, social,

Examples of Strategic Priorities



Kaituna River Action Plan_CoverImage

Water Quality

Ecosystems

Connectivity & Communities

PRIORITY ACTION 1: Take collective responsibility for improving the health and well-being of the Kaituna River and its tributaries

- Project 1.** Lowland drains and drainage canal improvement project
- Project 2.** Freshwater quality and quantity limits project
- Project 3.** Consented takes and discharges project
- Project 4.** Focus catchments project
- Project 5.** Farm environment plans project

PRIORITY ACTION 2: Create a network of healthy and diverse Kaituna habitats and ecosystems

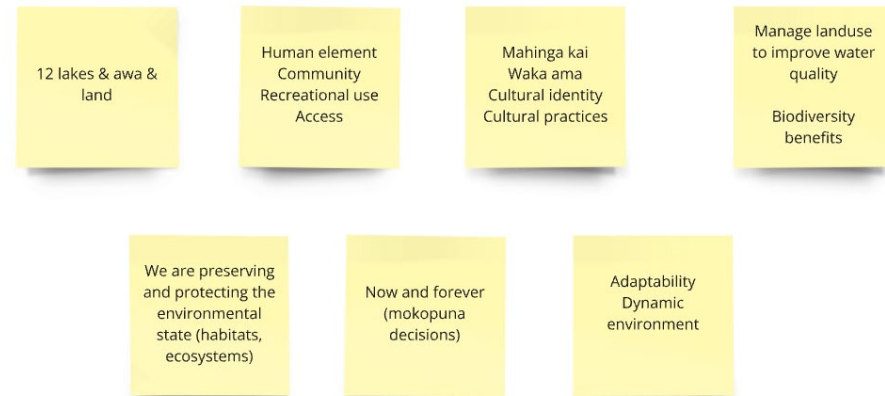
- Project 6.** Post Kaituna River re-diversion enhancement project
- Project 7.** Wetland re-creation project
- Project 8.** Kaituna habitats network project
- Project 9.** Pātaka kai project

PRIORITY ACTION 3: Connect our communities and visitors to our river and to our projects

- Project 10.** Kaituna community connection project
- Project 11.** Kaituna River access project
- Project 12.** Kaituna cycleway/walkway project
- Project 13.** Kaituna cultural and historical heritage project
- Project 14.** Upper catchment 'gateway' project
- Project 15.** Coastal park network project

Your Mission

The lakes of the Rotorua district and their catchments are preserved and protected for the use and enjoyment of present and future generations, while recognising and providing for the traditional relationship of Te Arawa with their ancestral lakes.



Identify / differentiate:

- 3-5 Priority areas of focus (themes / clusters)
- Enablers
- Our way of working
- One Wow Project or “game changer” that will make the biggest difference to our lakes and/or people.

Term	Meaning	Example
Strategic priorities	What needs to be achieved – high-level themes or areas for focused action that align with the Vision.	Ecological health of lake ecosystems
Priority actions	How it will be achieved - actionable initiatives, projects or interventions that align with one or more strategic priority.	New wetlands Lake weed management
Enablers	What is needed to support those efforts – supporting conditions to ensure an action is possible or carried out effectively.	Research and monitoring Funding

Where to from here?



Update on RTALSG Review actions

ning and reporting to the Strategy Group must align with this document.

ommendation 2:

y out a refresh of the Vision and Strategy Document to embed Te Tūāpapa o ngā wai o Te Arawa and
ude new/emerging issues. ~~No changes are suggested to the themes, focus areas and goals.~~
action plan could be developed to ensure focused action and form the basis for the Lakes
programme irrespective of the source of funding

ommendation 3: Elevate the status and role of TALT within the Strategy Group and associated Lakes
programme.

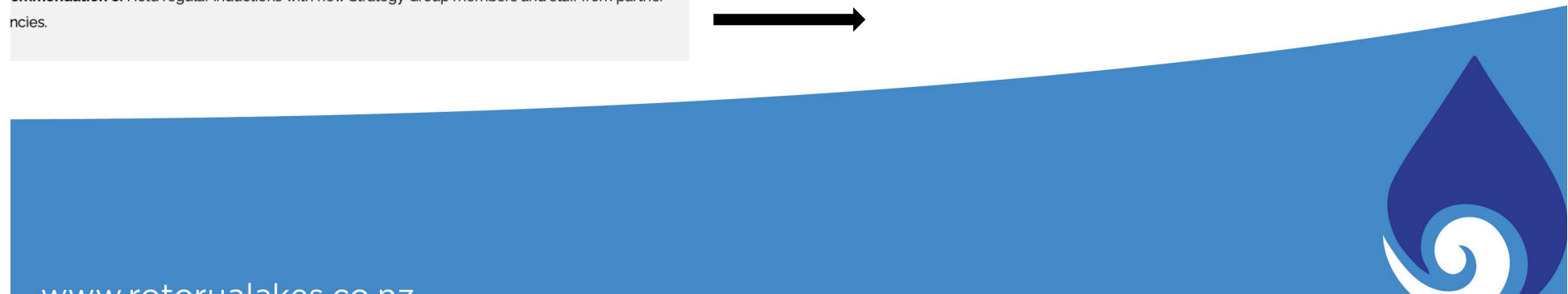
ommendation 4: Future proofing Chair arrangement through training and preparing a succession
i for future Te Arawa chairs to ensure that both technical and cultural aspects are met.

ommendation 5: All Strategy Group members to wānanga potential solutions to the matters raised
ugh interview feedback, particularly in relation to governance oversight function, partnership and
ity as well as connectivity with the community. Wānanga must be facilitated by an independent
itator who specialises in governance matters.

ommendation 6: Carry out a review of the Deed of Funding agreement by the Crown and all Strategy
up partners.

ommendation 7: TALT to carry out a review of their Protocol Agreement with Ministry for the
ironment and initiate a Mana Whakahono-ā-Rohe agreement with individual partner agencies.

ommendation 8: Hold regular inductions with new Strategy Group members and staff from partner
ncies.



Worksheet: Refreshed Lakes Strategy Components

VISION

The lakes of the Rotorua district and their catchments are preserved and protected for the use and enjoyment of present and future generations, while recognising and providing for the traditional relationship of Te Arawa with their ancestral lakes.

Strategic Priorities / Themes (3 or 5)

--	--	--	--	--

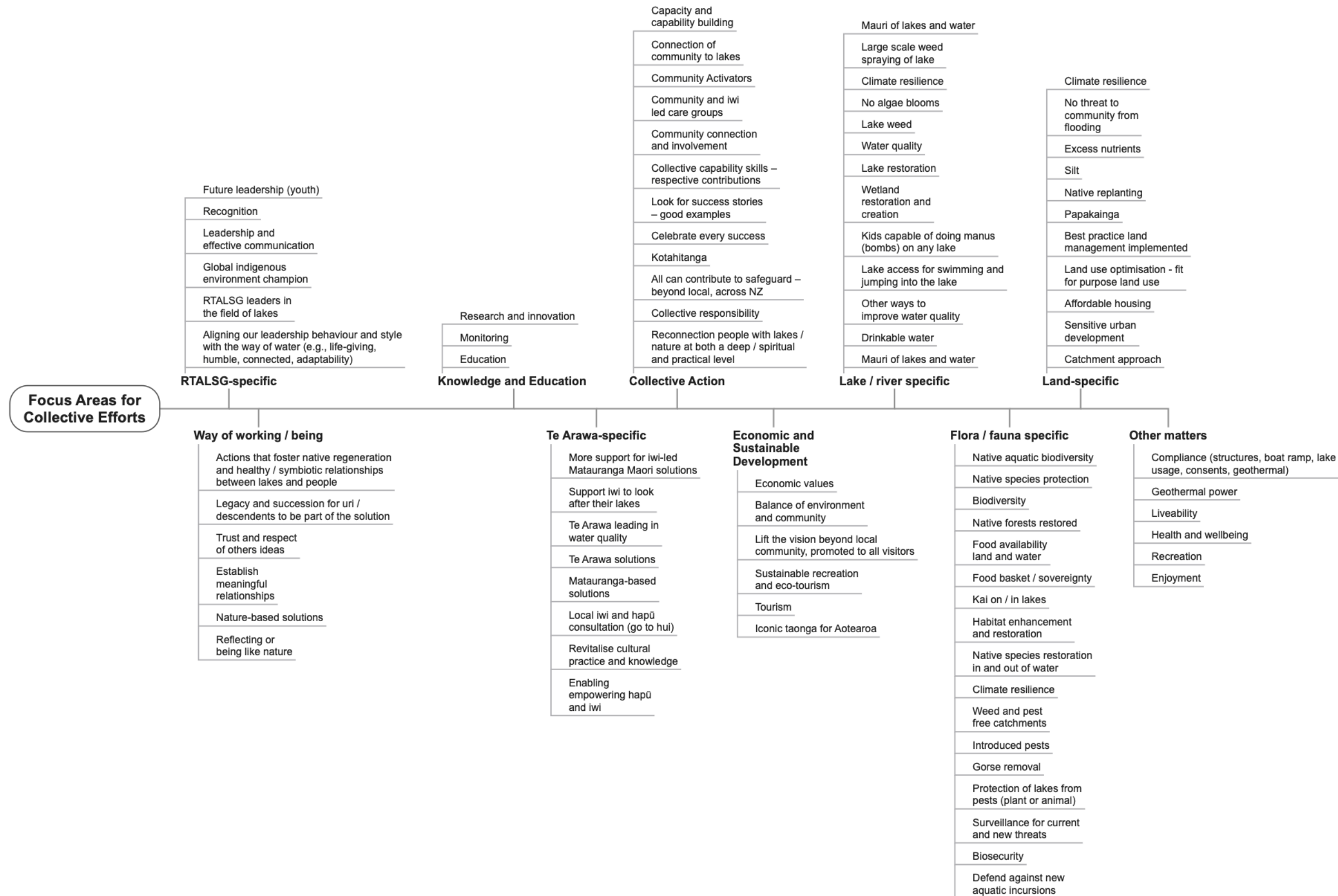
ENABLERS

WOW Project / Game changer project (s)

To make the biggest difference to our lakes and/or people

- Something we're not already doing or
- Something we could be doing differently from the status quo

June Workshop Feedback



VISION

Our vision

The lakes of the Rotorua district and their catchments are preserved and protected for the use and enjoyment of present and future generations, while recognising and providing for the traditional relationship of Te Arawa with their ancestral lakes.

Matakite:

E tiakina ana, e manaakitia ana hoki ngā roto o te rohe o Te Arawa hei painga mō tātau me ngā whakatipuranga e ara mai nei, ā, me te aro anō ki te hononga tuku iho o Te Arawa ki ō rātau roto

What does the vision mean?

The Strategy reflects the community vision for the future of the Rotorua lakes and therefore is broad in scope. It is aspirational and challenges partner organisations to deliver. In order to achieve the vision we must have a shared understanding of what the Strategy means.

In the original Lake’s Strategy, four key elements formed the essence of the vision: protection, use, enjoyment and management. These elements and achieving the right

balance between them continues to be of fundamental importance to the community.

Consultation with the community has provided a modern interpretation of the four key elements to implement the vision. The key elements are:

- connected
- iconic
- prosperous.

The Strategy seeks to achieve the vision through outcome and goal setting for each of these three elements.

What the community told us

The following table reflects what the community told us they want the Strategy for the Rotorua lakes to contain under each key element of the vision and also identifies how the community felt this would be achieved.

Existing initiatives that contribute towards achieving these outcomes were also acknowledged through consultation.



July CE / Staff Workshop

Imagining success



- Life
- Mokopuna swimming
- Kōura & other kai
- Crystal clear water
- More native plants
- Weed/rubbish-free
- People are safe/secure
- Happy whānau
- Kids doing manus (bombs) on any lake
- Kai & connection
- Papakāinga
- Ecotourism
- More community
- Cultural practice as a norm



- Native birds
- Laughter
- Splashing
- Relative silence



- Tranquility / at peace
- Love
- Connection / Re-connection
- Proud

In the future, you are standing beside your favourite lake which has been cared for via a successfully implemented Lakes Strategy. What are you seeing, hearing and feeling?

From June RTALSG workshop

Ecological restoration / wellbeing

- Restoration of native species (freshwater, terrestrial)
- Water quality & sustainable land use
- Biosecurity (freshwater, terrestrial)

Cultural reconnection / wellbeing

Community engagement / recreation

How do we know if the Strategy has been successful?

- Clear shared vision delivered through partnerships
- Agreed pathway for long-term improvement
- Framework for integrated management
- Consistent messaging
- Informed decision making
- Innovative thinking.

Future legacies of the Strategy

- Empowered lakes catchment communities
- Understanding and demonstration of the traditional, cultural and spiritual significance and relationship of the lakes to Te Arawa
- Lakes are a treasured taonga – promoted and protected appropriately
- Vibrant, healthy lands and waterways
- Customary fisheries are restored and revitalised
- Lakes to swim in and gather food from
- People want to live, play and do business in the lakes catchment.

Current Strategy

Way of Working

What can we do together that we can't do alone?

Collaborative governance can:

- influence government decisions and enable large-scale actions that may not be achievable individually.
- enable shared responsibility, projects, resourcing and funding.
- result in connected action and greater environmental impact.

What are the key elements of successful collaborative governance?

- Being clear on the Why / Wai
- Having a clear purpose
- Having clear roles, while acknowledging the responsibilities and accountabilities of each organisation
- Shared values and/or guiding principles
(EQUITY | RESPECT | RECIPROCITY | HUMILITY | CONNECTIVITY)

March Workshop

How will we work together?

The community confirmed they want a collaborative and participatory process in developing and implementing the Strategy.

Guiding principles

The following principles give guidance on our approach to the management of the lakes catchment. To achieve our vision, we will be:

- Focused on outcomes – a clear purpose
- Transparent and fully accountable – a clear process for delivery and identified lines of responsibility
- Grounded in best knowledge (including mātauranga and science) and open to full a range of solutions
- Kaitiaki of the lakes catchment – managing the lakes for future generations
- Seeking to provide certainty for the future – ensuring stakeholders and landowners are involved in planning for their future
- Partnership driven – engaging with agents of change by drawing on their skills, knowledge and energy. We will nurture existing relationships and build new ones
- Agile – flexible in our approach and delivery. Able to adapt to changing science, economics, technology and behaviours.

Current Strategy

CURRENT PROJECTS

- **Catchment land use change** – rules, incentives, environmental programmes, volunteer Care Groups.
- **Lake weed management** (spraying, harvesting, amenity clean ups, business case development).
- **Environmental monitoring** - cyanobacteria, swimmability, taonga species, Lake SPI, etc
- **Various research programmes** (Mātauranga and western science), e.g. kōura habitat, fisheries nutrient models, Uwhi etc
- **Wetlands:** Restoration and constructed wetlands
- **Access:** Lake reserves, public recreation
- **Maritime** - lake user safety (education, rule enforcement etc).
- **Public Health Warnings** (decision making, notification).
- **Urban stormwater and sewerage reticulation.**
- **Lake outlets and asset operation and maintenance** (various outlets, gates, Ohau wall, weir, alum dosing).
- **Tarawera Collective Impact Project.**
- **Regulatory:** Policy and plan making, consenting and compliance (private structures, diffuse and point source discharges etc).

GOALS IN CURRENT STRATEGY

